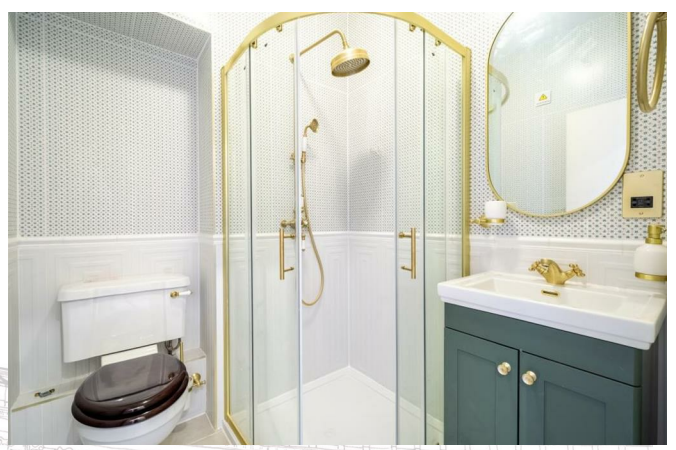




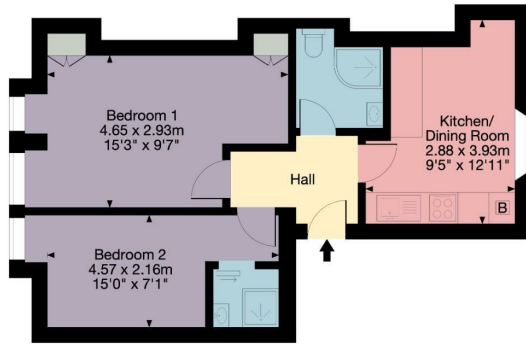
WALCOT TERRACE, BATH **£1,950 PER MONTH**
2 BED FLAT/APARTMENT, FURNISHED

- Beautifully presented second-floor apartment finished to a high standard throughout.
- Two double bedrooms offering comfortable and versatile accommodation.
- Contemporary kitchen/dining room featuring quality fittings and integrated appliances.
- Stylish modern shower room with premium fixtures and finishes.
- Fully furnished and available now for immediate occupation.
- Recently Refurbished Throughout

Stylish and fully furnished two-bedroom second-floor apartment in the sought-after Walcot Terrace area of Bath, just a short walk from the city centre. Finished to a high standard throughout, the property offers modern living with a contemporary kitchen, sleek shower room, and well-proportioned bedrooms. Available now, it is ideally suited to professionals or students seeking a high-quality home in a prime central location.



Second Floor Flat, 1 Walcot Terrace BAI 6AB
 Approx. Gross Internal Area
 41 sq ft - 441 sq m



KEY
 Kitchen
 Living Area
 Bedroom
 Bathroom
 Storage

Second Floor

Zest, 1a Mile End, London Road, Bath, BA1 6PT
 happytohelp@zestlovesproperty.com
 01225 481010



APPLICANT GUIDE:

1. View the property or arrange for a representative you trust to view it for you.
2. If you would like to take the property make an offer by completing the "Tenant Application Form" given to you at the time of viewing and either drop off at the office or send a copy via email to happytohelp@zestlovesproperty.com
3. Once your offer has been put forward to the landlord and they have accepted your application you will be required to pay the Holding Fee of 1 weeks rent and complete and submit our Tenant Terms of Business (where you will also be required to upload proof of identity). This then secures the property (only once the holding fee has been paid) and any other viewings will be cancelled. These funds will be deducted from your move in monies (rent) once your application is approved.
4. You will then be passed to our friendly, Zest New Lets team, who will commence your referencing, application and contracts process. Please note, you risk forfeiting your holding deposit if you do not supply the required referencing information within 15 days from the initial request. If you are a Company then a Company Agency Fee will apply of £468. The deposit is usually equal to five week's rent. Deposits are protected with the Deposit Protection Service (DPS) and must be paid by the applicant and not a third party. Please ensure you provide references for employment, previous tenancies and, if self-employed, your latest set of company accounts to hand. If you do not meet the required salary limits (2.5 times the monthly rent) you will require a guarantor who is a UK home owner and able to cover your obligations. Alternatively, you can pay all of the rent in advance.
5. Pay your first month's rent before the start date of your tenancy. Rent is paid monthly at the advertised PCM figure. Bank transfers are accepted, but payment is not cleared until the funds are received into our client account.

ZEST PROPERTY SERVICES

1A MILE END
 LONDON ROAD
 BATH
 BA1 6PT

T: 01225 48 10 10
 E: HAPPYTOHELP@ZESTLOVESPROPERTY.COM

